

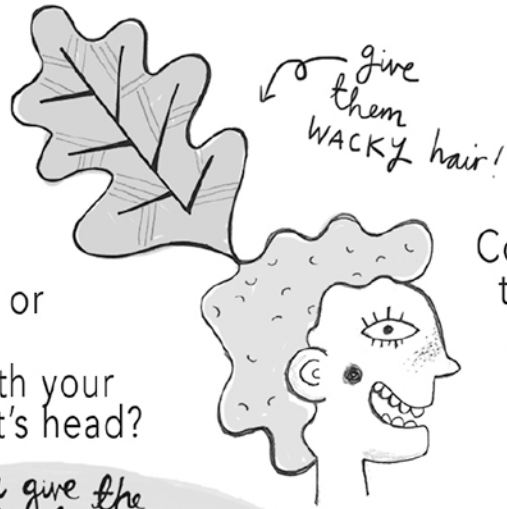
HERE ARE SOME GREAT ACTIVITIES FOR YOU TO DO AROUND AVONMOUTH TRAIN STATION

go to Gloucester Road
DESIGN YOUR OWN PILLAR HEAD

When walking down Gloucester Road, you'll see some funny faces on top of the pillars. Can you design your own with your face or your friends' face? Or with your pet's head?



Can you give the pillar heads names? IMAGINE what their favourite foods would be. What music would they like?



give them WACKY hair!

MAKE leafy PEOPLE

Collect leaves from different trees around the local area and see if you make them into pictures of people by drawing around them. You could use other things that you find too, like sticks, grass or even litter.



If you were a tree how wide would you be?

You can tell if it was a good year for growth: lots of rainfall and warm weather equals a thicker growth ring!



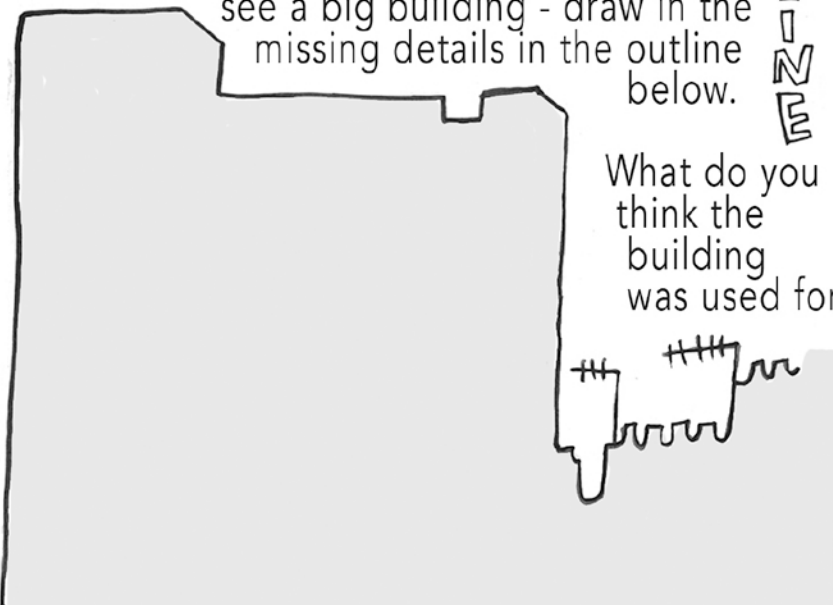
In Avonmouth Park you'll see that there are some big logs. By counting the rings at the end of the logs, can you guess how old the tree was?

how old is the tree?

what is written on the side of the building?

FILL IN the OUTLINE

From Avonmouth Park you'll see a big building - draw in the missing details in the outline below.



What do you think the building was used for?