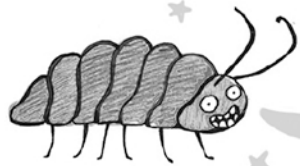


HERE ARE SOME GREAT ACTIVITIES FOR YOU TO DO AROUND STAPLETON ROAD TRAIN STATION

Take A Walk
along STANLEY
and PARK

you'll see some interesting wooden structures fixed to the outside of the houses - these are insect hotels!

name 3 materials the HOTELS are made from



I really love the DARK

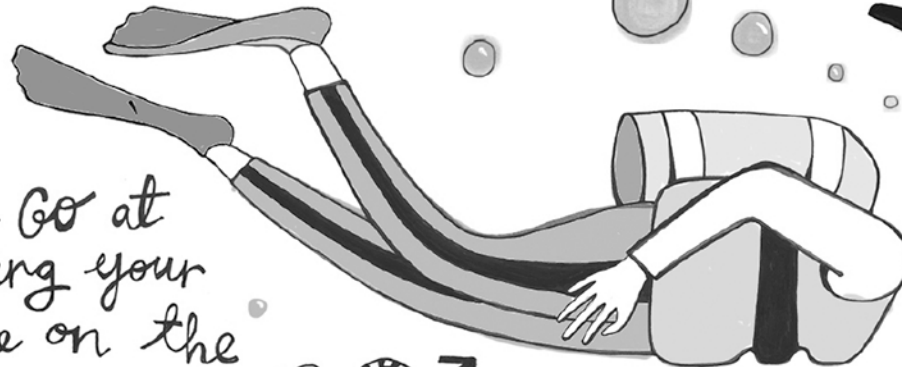
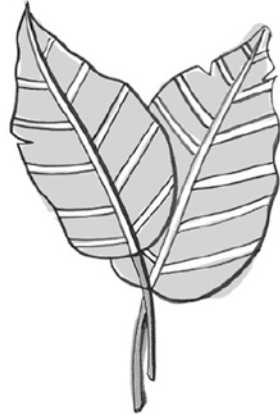
Can you list 2 features that make the insect hotels ideal places for creepy-crawlies to live?



EXPLORE
ST MARKS ROAD

St. Marks Road is home to many independent businesses and colourful art - can you spot any of the following artworks?

- a sculpture of a lamb
- a sun sculpture
- a scuba diver
- a lighthouse
- a metal leaf
- a metal dove
- a painting of a fish



HAVE a Go at drawing your face on the SCUBA DIVER

List 2 fruits & 2 vegetables that you see along YOUR walk

guess what's in peoples' shopping bags



