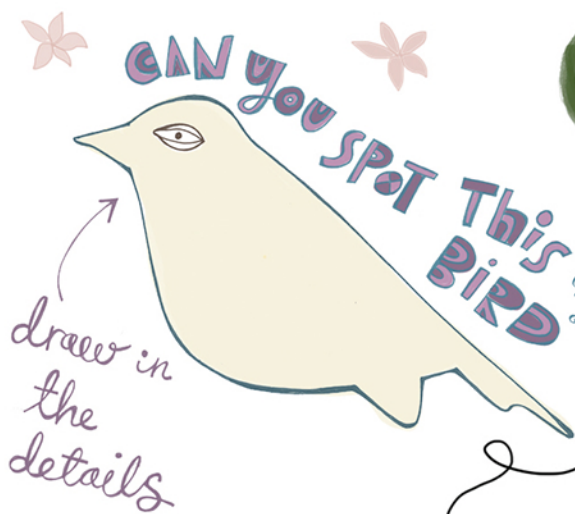


# HERE ARE SOME GREAT ACTIVITIES FOR YOU TO DO AROUND MONTPELIER TRAIN STATION



draw in the details



Pick a colour and then photograph it everywhere you go! Try to get an interesting mix of photos taken from a mix of different perspectives.

photograph something

- rough & bumpy or with a smooth texture
- really close up or very far away
- very big or very small
- photographed from above / below

or  
Picton Street

photograph something  
RED PINK GREEN

Bring some chalks with you and find a blank floor or wall to draw on (make sure it's a spot where nobody will mind!). Use the local landscape as your inspiration: the art, the buildings, the plants, people and more!

## ADD TO THE STREET ART



draw on the  
Rainbow Bridge

In your sketchbook make some drawings of the trees turned into other animals.

Can you draw a tree as a giraffe or as a flamingo?

Or get creative and draw a tree-monster!

Find the Elephant in St. Andrews Park



Fill in the outline with a sketch or rubbing of its wrinkly texture.