

HERE ARE SOME GREAT ACTIVITIES FOR YOU TO DO AROUND SHIREHAMPTON TRAIN STATION

On the bench in The Daisy Field is a carving dedicated to the 300,000 horses that were trained here for WW I.

Make a drawing of your own to commemorate the horses.



A greenfinch is greeny-brown with a yellow streak under its wings

a Redwing is a small winter thrush it's brown with red flanks

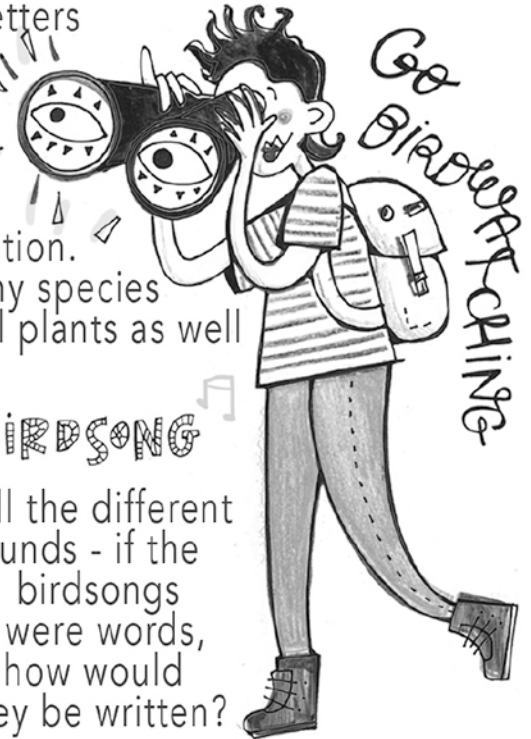


Can you unscramble these letters to reveal the name of the local marshland?

Pahe:sitLrmlg marsh

The marsh is a noted spot for wildlife conservation.

There are many species of unusual plants as well as birds.



Go Birdwatching

LISTEN TO THE BIRDSONG

Keep a note of all the different sounds - if the birdsongs were words, how would they be written?

PEW PEW PEW
Peeeeeep



in the Daisy field
sit down on the bench...

Can you imagine this field full of horses being trained here for battle? Up to 7,000 were kept in Shirehampton at a time! The horses came here on ships from America, Canada, Spain and Argentina!

maybe you'll find a



It's not unusual for locals to unearth local history and to find horseshoes in their gardens. Keep your eyes peeled - can you find one?

imagine... if horses had different accents, how would their NEIGHS sound?

